

# Simple internet usage monitoring

# Fastvue for Business

Send scheduled reports to Department Managers and HR detailing their staff's Internet usage.





# Fastvue for Education

Safeguard students by monitoring access to self-harm, extremist, or inappropriate content.

# Fastvue for IT

Easily discover the firewall features and policies responsible for allowing or blocking specific traffic.



Would you know if  
a user searches  
for “easiest way to  
kill myself”?



## Real-time alerts

Sending alerts on any traffic, such as online searches for keywords, visits to unacceptable content or extended time on unproductive sites.

Can you easily  
send internet  
usage reports to  
non-technical  
people?



## Internet usage reports

Sending simple reports to non-technical audiences such as HR, Department Managers, School Principals, Teachers, Pastoral care, or employees themselves.

# Simple Internet Usage Monitoring?

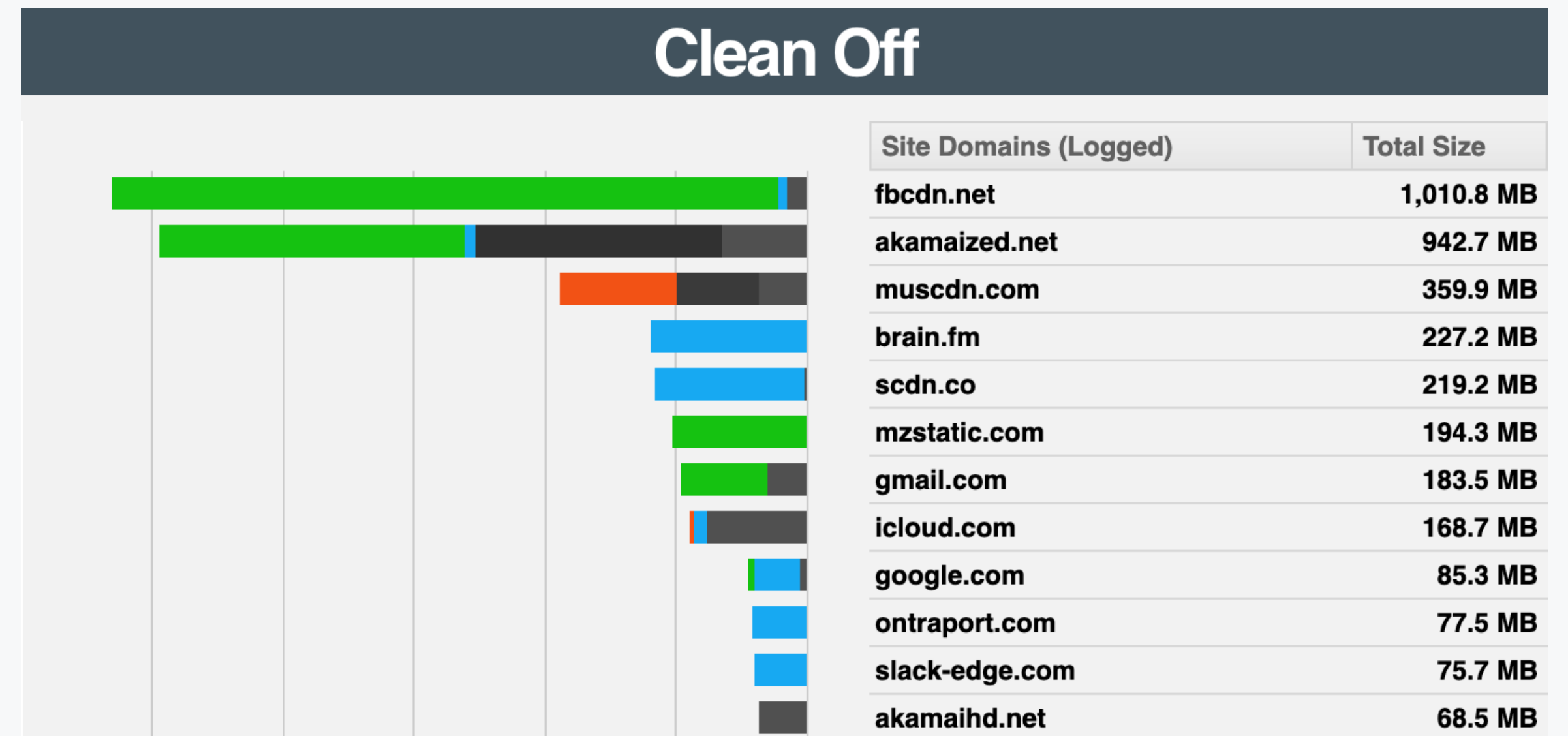
#	Domain	Traffic ↓	%	Pages	Requests
1	googlevideo.com	84 MB	59.31	0	15
2	akamaihd.net	8 MB	5.8	0	37
3	twitter.com	7 MB	5.26	0	348
4	twimg.com	7 MB	5.16	0	55
5	google.com	7 MB	4.84	0	163
6	c.google.com	5 MB	3.44	0	1
7	googleapis.com	3 MB	2.38	0	5
8	cloudfront.net	3 MB	2.26	0	236
9	nationalgeographic.com	3 MB	2.09	21	160
10	10.211.55.103	2 MB	1.65	0	95
11	yimg.com	2 MB	1.38	0	10
12	pngisd.org	1 MB	0.87	1	336
13	theplatform.com	1 MB	0.81	0	32
14	sophos.com	562 KB	0.39	2	81
15	desk.com	554 KB	0.38	0	7
16	ff.avast.com	458 KB	0.31	0	49
17	monetate.net	456 KB	0.31	0	37
18	googleusercontent.com	445 KB	0.31	0	35
19	p.nationalgeographic.com	390 KB	0.27	0	14
20	typekit.net	360 KB	0.25	0	5
21	youtube.com	341 KB	0.23	0	5
22	d.nationalgeographic.com	293 KB	0.2	0	8

# Which 2 sites did I visit?



# Introducing Site Clean

A unique technology that transforms log data to simplify and reflect the internet browsing behaviour of real people.

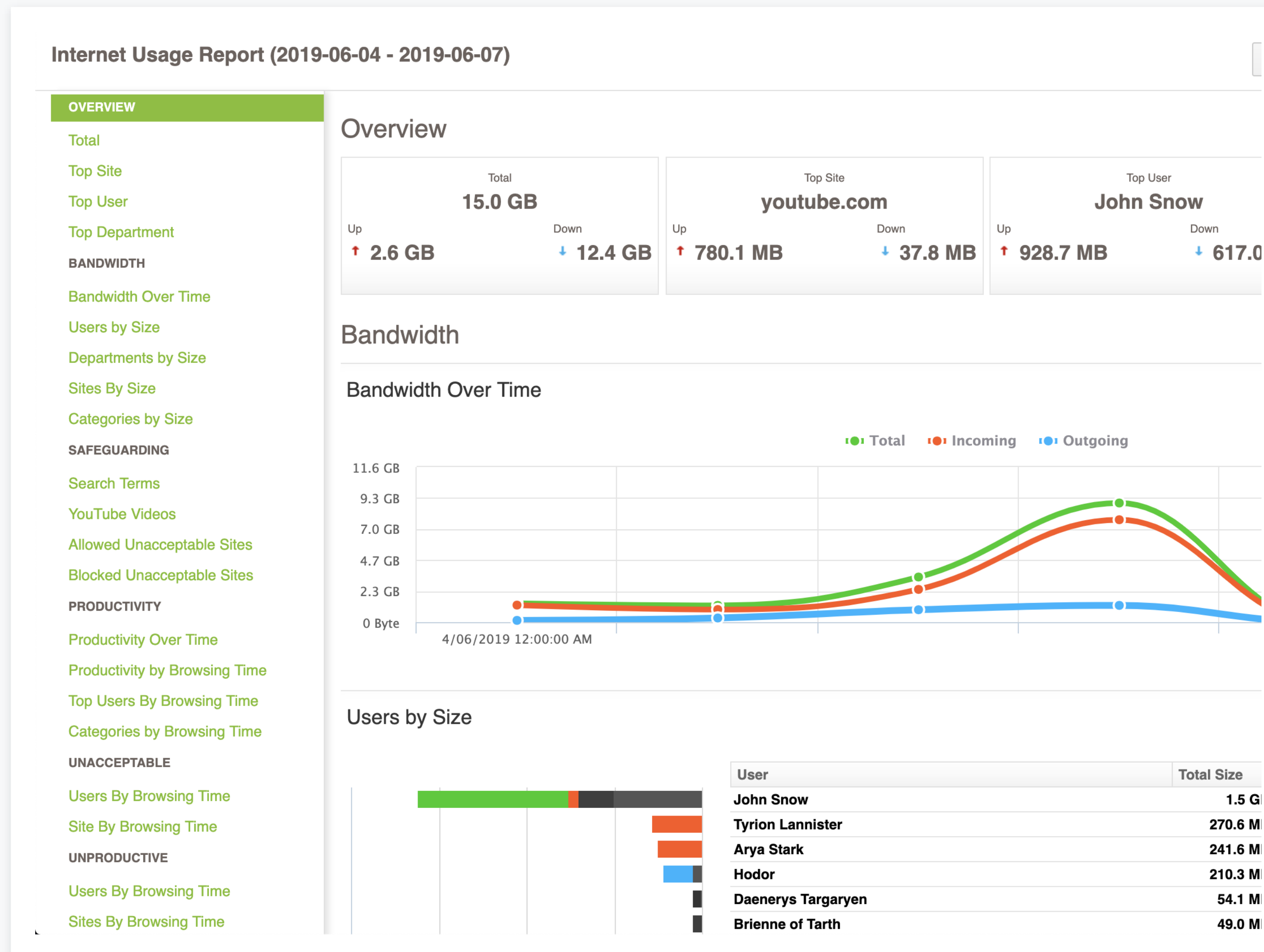


# Fastvue Reporter features



# Intuitive reports

Well researched, pre-defined reports highlight exactly what non-technical audiences need to know.





# Stay alert

Don't watch charts all day? Receive real-time alerts for important network concerns.

The screenshot shows a notification panel with three main categories of alerts:

- Self Harm Searches** (Dismiss 1):
  - Self Harm Searches: George Smith (2019-10-11 13:53)
- Downloads > 100 MB** (Dismiss 3):
  - Downloads > 100 MB: Ajay Denver (2019-10-11 13:00) [Dismiss]
  - Downloads > 100 MB: Elysia Welford (2019-10-11 09:20)
  - Downloads > 100 MB: Marissa Marco (2019-10-10 20:55)
- Unproductive Browsing > 30 Minutes** (Dismiss 3):
  - Unproductive Browsing > 30 Minutes: Marissa Marco (2019-10-11 13:19)
  - Unproductive Browsing > 30 Minutes: George Smith (2019-10-11 13:01)
  - Unproductive Browsing > 30 Minutes: Nathanael Fowlestone (2019-10-11 12:58)

Self Harm Searches			
User: Little Johnny			
Timestamp	Search Terms	User	Origin Domain
2018-07-27 10:06:41	easiest ways to kill myself	Little Johnny	<a href="https://google.com.au">google.com.au</a>



# Department Reports

Active Directory integration makes User and Department investigations a breeze.

Overview Report | User Overview Report | Activity Report

Internet Usage | IT Network and Security | All Usage

Field: Security Group (selected), User, User Login Name, Department, Company, Office, Origin Domain, Category

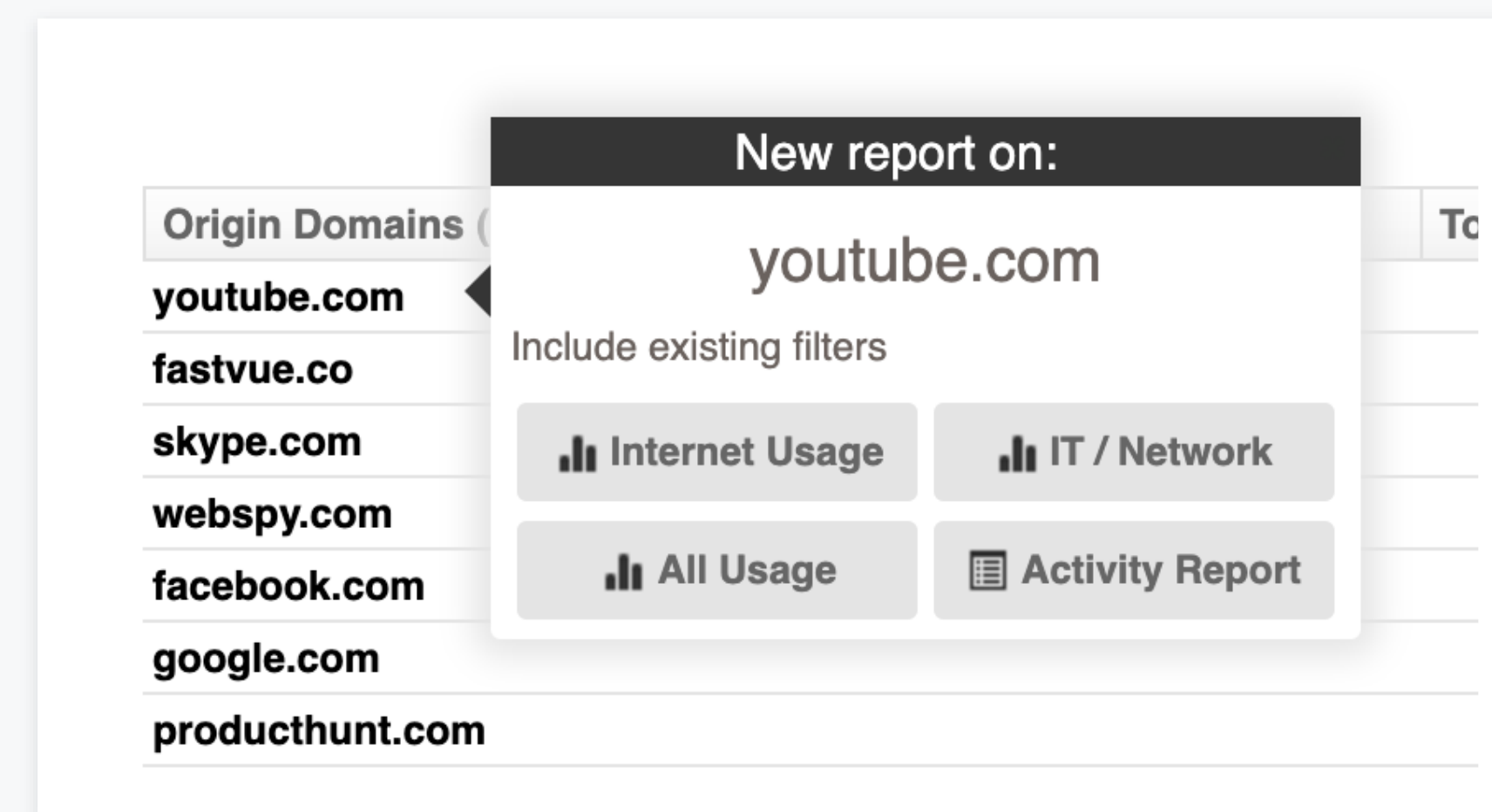
Operator: Equal to

1 filter | Schedule | Run Report



# One click investigations

Click any item to run an investigation report, such as a user, site, application or web category.





# Activity reports

Full activity details,  
grouped by sessions,  
ordered by time.

	Start Time	End Time	Browsing Time	User	Origin Domain	Size
▼	08:03:51	08:51:59	00:04:22	scotts-mbp	facebook.com	
	08:03:51	Social Networking	Allowed	https://static.xx.fbcdn.net/rsrc.php/yl/r/H3nktOa7ZMg.ico		
	08:07:12	Social Networking	Allowed	https://static.xx.fbcdn.net/rsrc.php/yl/r/H3nktOa7ZMg.ico		
	08:08:09	Social Networking	Allowed	https://static.xx.fbcdn.net/rsrc.php/yl/r/H3nktOa7ZMg.ico		
	08:40:26	Social Networking	Allowed	https://static.xx.fbcdn.net/rsrc.php/yl/r/H3nktOa7ZMg.ico		
	08:51:59	Social Networking	Allowed	https://static.xx.fbcdn.net/rsrc.php/yl/r/H3nktOa7ZMg.ico		
▶	08:07:22	08:07:25	00:00:00	scotts-mbp	fastvue.co	
▶	08:08:19	08:08:21	00:00:00	scotts-mbp	spiceworks.com	
▶	08:23:26	08:23:28	00:00:00	scotts-iphone	facebook.com	
▶	08:47:45	08:50:21	00:04:22	scotts-ipad	facebook.com	

08:00

	Start Time	End Time	User	Records
▶	08:11:50	08:57:31	Frederico, Keira	5
▶	08:15:27	08:15:27	Hohlfeld, Diedra	1
▶	08:17:54	08:50:05	Anders, Perry	3
▶	08:18:25	08:31:43	Jackso, Rodger	3
▶	08:24:24	08:57:00	Holmstrom, Barbar	3
▶	08:28:12	08:28:12	Vanwingerden, Delcie	1
▶	08:40:29	08:40:29	Carotenuto, Harland	1
▶	08:48:59	08:48:59	Summerill, Norine	1
▶	08:54:44	08:54:44	Lanterman, Clement	1



# Avoid awkward conversations

Was a user really trying to go to a blocked website?

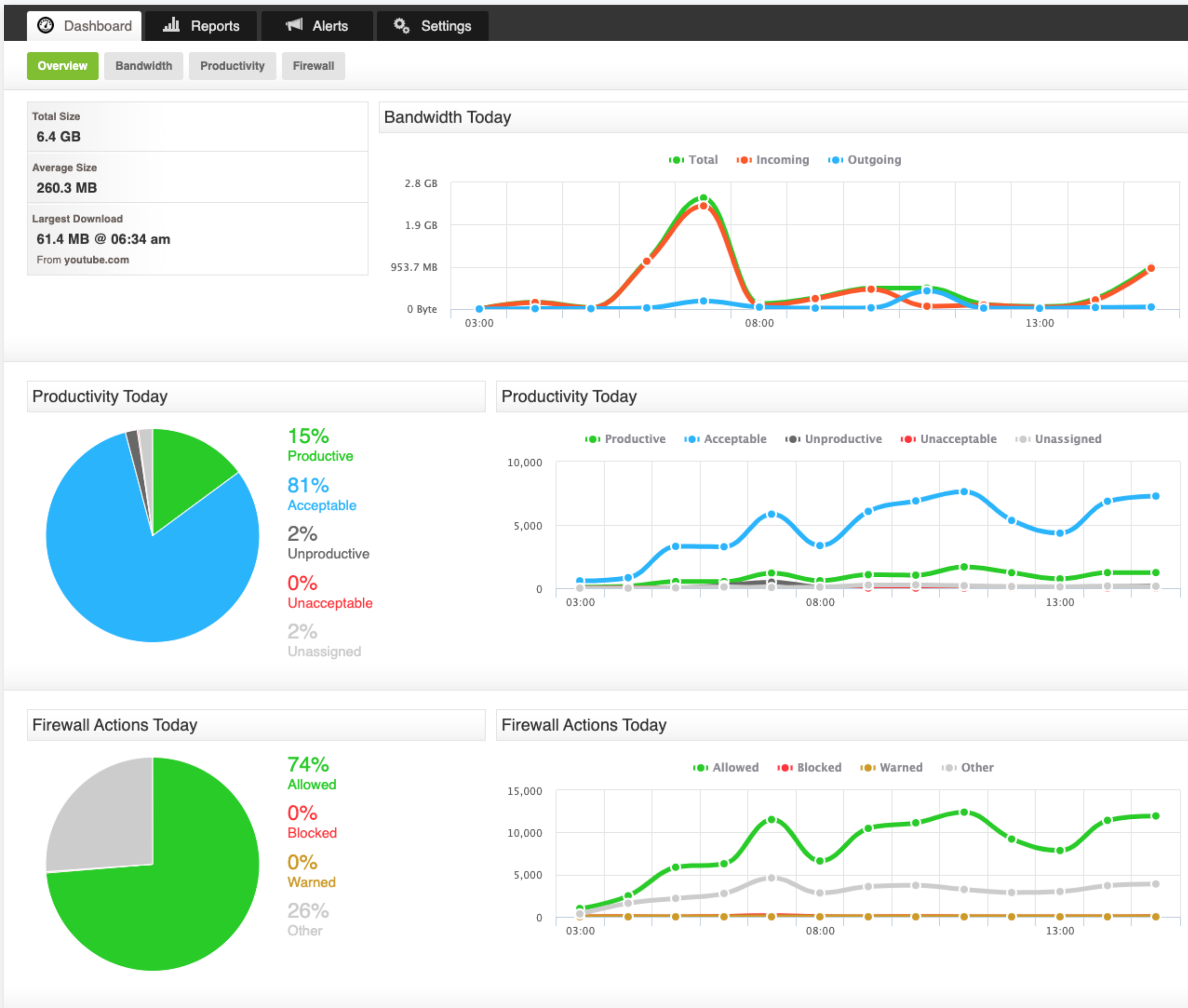
Affected Site	Blocked Site	Category	Blocked Hits
football.com	bet365.com	Gambling	1
yahoo.com	tmz.com	Nudity and Risque	1
sexhealthlife.com	imgur.com	Pornography	1
yahoo.com	eonline.com	Nudity and Risque	1





# Real time dashboards

Real Time Dashboards are always ready to tell you what is happening on your network right now.

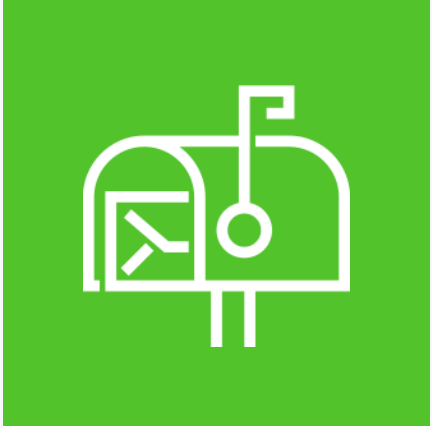




# What is unproductive?

Use your firewall's URL Filtering Categories to customize the productivity assessment for your organization

Unacceptable	Unproductive	Acceptable
Adult Content	Alcohol	Advertisements
Anonymizers	Alcohol & Tobacco	Art/Culture/Heritage
Anonymizing Utilities	Controlled substances	Auctions & Classified Ads
Blocked URLs for Default Policy	Controversial Opinions	Auctions/Classifieds
Browser Exploits	Criminal Activities	Audio Files
Command & Control	Dating/Personals	Backup Files
Criminal Activity	Dating/Social Networking	Blogs & Forums
Gambling	Digital Postcards	Blogs/Wiki
Gruesome Content	Drugs	Chat
Hacking	E-commerce	ALLWebTraffic
Hacking/Computer Crime	Entertainment	Compressed Files



# Inbox delivery

Reports delivered to your inbox each day, week or month.

### Schedule Report ×

**Report title**  
Internet Usage Report

**Report Schedule**

On  Off **Daily**  
Yesterday's report delivered every morning.

On  Off **Weekly**  
Weekly report from Monday to Sunday, delivered every Monday morning.

On  Off **Monthly**  
Last month's report, delivered at the start of the each month.

**Email these reports to**  
hr@mycompany.com

Send Link (Private Link) ▼

Attach PDF

Attach CSV

Close Schedule Report

# How does **Fastvue** work

- Imports Syslog
- Enable Content Filtering & HTTPS Inspection
- Installation On-Premises or Private Cloud,  
Windows or Linux Server